



CHRISTIAN CONSERVATORY OF MUSIC, CANADA

EXAMINATION SYLLABUS 2012 Edition

PIANO ADDENDUM

• *Primary 1* • *Primary 2*

PIANO – PRIMARY 1 LEVEL

For this examination, candidates must choose *four* selections.

At least one piece must be a hymn and at least one piece must be from the contemporary praise & worship list. Memorization is expected. See MEMORY on Page 30, current syllabus.

A copy of each selection to be performed must be brought to the examination.

See PIANO SECTION – GENERAL INFORMATION in current syllabus.

For current examination fees and session dates, please visit www.ccmce examinations.org

Reminder: *Candidates should be prepared to give a brief introduction of one selection and include the reason why they chose the piece and how it speaks to them spiritually.*

HYMNS

Alfred's Basic Piano Library, Hymn Book - Level 2

© MCMXCIII by ALFRED PUBLISHING CO., INC. ISBN 0-7390-0557-X

- A Mighty Fortress is Our God (pg. 4)
- Come, Thou Almighty King (pg. 6)
- Holy, Holy, Holy (pg. 8)

Faber & Faber, Play Time Piano/Hymns - Level 1

© 1990 by THE FJH MUSIC COMPANY INC. ISBN 0-929666-00-3

- Do Lord (pg. 6)
- For the Beauty of the Earth (pg.24)
- Holy, Holy, Holy (pg. 10))
- Joyful, Joyful We Adore Thee (pg. 16)
- Stand Up, Stand Up for Jesus (pg. 8)

Hal Leonard: Traditional Hymns, Level 2

© 2002 by HAL LEONARD CORPORATION ISBN 0-634-03678-5

- All Glory, Laud and Honor (pg. 2)
- Come, Christians, Join to Sing (pg. 6)
- Down in My Heart (pg. 8)
- I Sing the Mighty Power of God (pg. 10)
- O Worship the King (pg. 16)
- Praise Him, All Ye Little Children (pg. 18)
- What a Friend We Have in Jesus (pg. 22)

Philip Keveren: Christian Children's Favorites

© 2002 by HAL LEONARD CORPORATION ISBN-0-634-04120-7

- God is so Good (pg. 22)
- His Banner Over Me is Love (pg. 34)
- If You're Happy and You Know It (pg. 40)
- Jesus Loves Me (pg. 44)
- Jesus Loves the Little Children (pg. 46)
- Praise Him All Ye Little Children (pg. 50)
- Tell Me the Stories of Jesus (pg. 52)
- This Little Light of Mine (pg. 54)

CONTEMPORARY PRAISE & WORSHIP

Carol Tornquist: Music in Me/Praise & Worship - Level 1

© 2006 by Word Music, LLC. ISBN -13: 978-1-4232-1880-1

- Father, I Adore You (pg. 6)
- He Has Made Me Glad (pg. 24)
- I Love You, Lord (pg. 14)
- Praise the Name of Jesus (pr. 12)
- Seek Ye First (pg. 8)
- Thy Word (pg. 28)

Play Praise – Most Requested - Book 1

Arranged by Tom Gerou & Victor Labenske

© MMVII by Alfred Publishing Co. Inc. ISBN-10: 0-7390-3899-0, ISBN-13: 978-0-7390-3899-4

- Ancient of Days (pg. 2)
- Come Into His Presence (pg. 8)
- I Sing Praises (pg. 4)
- Jesus, Name Above All Names (pg. 18)
- Open the Eyes of My Heart (pg. 20)
- Shout to the Lord (pg. 22)
- There is None Like You (pg. 12)

TECHNICAL REQUIREMENTS

All tempo markings are to be considered as *minimum* speeds.

All technical requirements are to be played from memory.

SCALES	KEYS	PLAYED	TEMPO	NOTE VALUE
Legato	C, G, Major A Natural Minor Form	Hands Separately 1 octave (legato)	♩ = 88	Quarter notes

TRIADS	KEYS	PLAYED	TEMPO	NOTE VALUE
Broken Root position and inversions	C, G Major A Minor	Hands Separately 1 octave, legato	♩ = 54	Triplet eighth notes

SIGHT PLAYING

1. The STAFF sight playing portion of the examination will be based on the following elements:
 - Keys: C, or G Major
 - Note values: whole note, half notes.
- A short piece consisting of two bars in either right hand or left hand.

EAR TESTS

1. Identify Between High and Low Pitches
2. Identify a 5-note passage as Ascending or Descending
3. Two 5-note melodies will be played and the candidate will identify between Forte or Piano

CO-REQUISITES

There are **NO** co-requisites at this grade level.

PIANO – PRIMARY 2 LEVEL

For this examination, candidates must choose *four* selections.

At least one piece must be a hymn and at least one piece must be from the contemporary praise & worship list. Memorization is expected. See MEMORY on Page 30, current syllabus.

A copy of each selection to be performed must be brought to the examination.
See PIANO SECTION – GENERAL INFORMATION in current syllabus.

For current examination fees and session dates, please visit www.cmcexaminations.org

Reminder: *Candidates should be prepared to give a brief introduction of one selection and include the reason why they chose the piece and how it speaks to them spiritually.*

HYMNS

Alfred's Basic Piano Library, Hymn Book - Level 2

© MCMXCIII by ALFRED PUBLISHING CO., INC. ISBN 0-7390-0557-X

- Give Me That Old-time Religion (pg. 18)
- He Leadeth Me (pg. 30)
- I am Bound for the Promised Land (pg. 20)
- Jesus Calls Us (pg. 14)
- Joy, Joy, Joy (pg. 24)
- Just a Closer Walk with Thee (pg. 28)
- Just As I Am (pg. 12)
- Savior, Like a Shepherd Lead Us (pg. 22)

Bastien Piano Basics, Popular Hymns, - Level 3

© 1987 by KJOS WEST ISBN 0-8497-9215-7

- Crown Him with Many Crowns (pg. 14)
- Glorious Things of Thee are Spoken (pg. 13)
- God of Our Fathers (pg. 31)
- Love Divine, All Loves Excelling (pg. 29)
- Nobody Knows the Trouble I've Seen (pg. 17)
- Onward Christian Soldiers (pg. 2)
- Softly and Tenderly (pg. 6)
- Sweet Hour of Prayer (pg. 4)
- Swing Low, Sweet Chariot (pg. 16)
- Take My Life, and Let It Be (pg. 26)
- What a Friend We Have in Jesus (pg. 10)

Faber & Faber, Play Time Piano/Hymns - Level 2A

© 1992 by THE FJH MUSIC COMPANY INC. ISBN 0-929666-38-0

- Come, Thou Long Expected Jesus (pg. 20)
- Dona Nobis Pacem (pg. 16)
- Ezekiel Saw the Wheel (pg. 22)
- Little David, Play on Your Harp (pg. 14)
- Lord, Speak to Me, That I May Speak (pg. 8)
- Praise God From Whom All Blessings Flow (pg. 4)
- Rock-a My Soul (pg. 9)
- Simple Gifts (pg. 12)
- This is the Day (pg. 10)
- Wasn't That a Band (pg. 6)

Faber & Faber, Play Time Piano/Hymns - Level 2B

© 1988,1990 by Dovetree Productions, Inc.. ISBN 978-1-61677-003-7

- Battle Hymn of the Republic (pg. 18)
- Give Me Oil in My Lamp (pg. 4)
- Go, Tell It on the Mountain (pg. 14)
- Hallelujah, Praise the Lord (pg. 8)
- He Leadeth Me (pg. 10)
- Jesus Loves the Little Children (pg. 25)
- O Worship The King (pg. 24)
- Praise to The Lord, The Almighty (pg. 20)
- This Train (pg. 26)
- We Gather Together (pg. 9)

Hal Leonard Student Piano Library, Traditional Hymns - Level 3

© 2002 by HAL LEONARD CORPORATION ISBN 0-634-03679-3

- A Mighty Fortress Is Our God (pg. 6)
- All Things Bright and Beautiful (pg. 18)
- Come, Thou Almighty King (pg. 8)
- Ezekiel Saw the Wheel (pg. 22)
- Holy, Holy, Holy! Lord God Almighty (pg. 15)
- It is Well With My Soul (pg. 16)
- Little David, Play on Your Harp (pg. 20)
- Tell Me the Stories of Jesus (pg. 2)
- Zacchaeus (pg. 10)

Philip Keveren: Christian Children's Favorites

© 2002 by HAL LEONARD CORPORATION ISBN-0-634-04120-7

- The B-I-B-L-E (pg. 8)
- Come Into His Presence (pg. 10)
- Deep and Wide (pg. 16)
- Do Lord (pg. 18)
- The Gospel Train (pg. 24)
- He's Got the Whole World (pg. 28)
- I Will Sing of the Mercies (pg. 31)
- What a Mighty God We Serve (pg. 51)

CONTEMPORARY PRAISE & WORSHIP

Carol Tornquist: Music in Me/Praise & Worship - Level 2

© 2006 by Word Music, LLC. ISBN -13: 978-1-4234-1879-5

- In His Time (pg. 28)
- Isn't He? (pg. 14)
- Jesus, What a Wonder You Are (pg. 30)
- More Precious Than silver (pg. 26)
- O How He Loves You and Me (pg. 16)
- Open Our Eyes, Lord (pg. 10)
- Purify My Heart (pg. 22)
- Sanctuary (pg. 6)
- Welcome to Our World (pg. 20)
- Wonderful, Merciful Savior (pg. 3)

Play Praise – Most Requested - Book 2

Arranged by Tom Gerou & Victor Labenske

© MMVI by Alfred Publishing Co. Inc. ISBN-0-7390-3900-8, Ancient of Days (pg. 2)

- Change My Heart Oh God (pg. 6)
- Come Now is the Time to Worship (pg. 2)
- Forever (pg. 11)
- Give Thanks (pg.16)
- More Precious Than Silver (pg. 20)
- Take My Life (pg. 8)
- The Power of Your Love (pg. 22)
- You are My All in All (pg. 4)

TECHNICAL REQUIREMENTS

All tempo markings are to be considered as *minimum* speeds.

All technical requirements are to be played from memory.

SCALES	KEYS	PLAYED	TEMPO	NOTE VALUE
Legato	C, G, and F Major A and E Natural Minor	Hands Separately 2 octaves (legato)	♩ = 120	Quarter notes
Staccato	C, G, F Major A and E Natural Minor	Hands Separately 1 octave (staccato)	♩ = 120	Quarter notes
Contrary Motion	C Major – beginning on Middle C	1 octave, legato	♩ = 120	Quarter notes

TRIADS	KEYS	PLAYED	TEMPO	NOTE VALUE
Broken Root position and inversions	C, G and F Major A and E Minor	Hands Separately 1 octave, legato	♩ = 56	Triplet eighth notes

SIGHT PLAYING

1. The STAFF sight playing portion of the examination will be based on the following elements:
 - Keys: C or G Major
 - Note values: whole note, half notes, quarter notes.
 - A short piece consisting of two bars of right hand flowing into two bars of left hand.
2. The CHORD CHART portion of the sight playing gives the candidate the opportunity to demonstrate their ability to accurately interpret given chord symbols. Candidates will be expected to play a four bar passage in $\frac{4}{4}$ time, using chords in the right hand and the root of the chord in the left hand. Candidates are expected to play the chords retaining the common notes in the same voices, creating smooth voice leading. Candidates are encouraged to elaborate by adding simple passing notes or rhythmic variations if they are comfortable doing so. Tempo indications will be either “joyfully” or “worshipful”. The Chord Chart will be based on the following keys and chords.

KEYS	CHORDS		
C Major	C	F	G

Example:

To be played worshipfully

$\frac{4}{4}$ C / / / | F / / / | G / / / | C / / / ||

EAR TESTS

1. SCALES - Candidates will identify the type of scale after it has been played once ascending and descending by the examiner.
Types: i) Major (Ionian) ii) Natural Minor (Aeolian)
2. TRIADS - Candidate will identify the type of triad after each has been played once broken and once solid by the examiner.

Types: i) Major ii) Minor

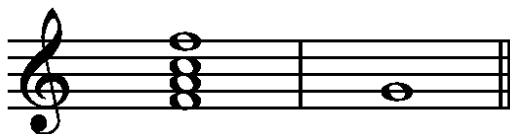
Example: 8



3. SCALE DEGREES – Candidates will identify individual degrees of a major scale. The Tonic chord and the scale degree will each be played once by the examiner.

Degrees: 1, 2, or 3

Example:



The candidate will answer “2”.

CO-REQUISITES

There are **NO** co-requisites at this grade level.